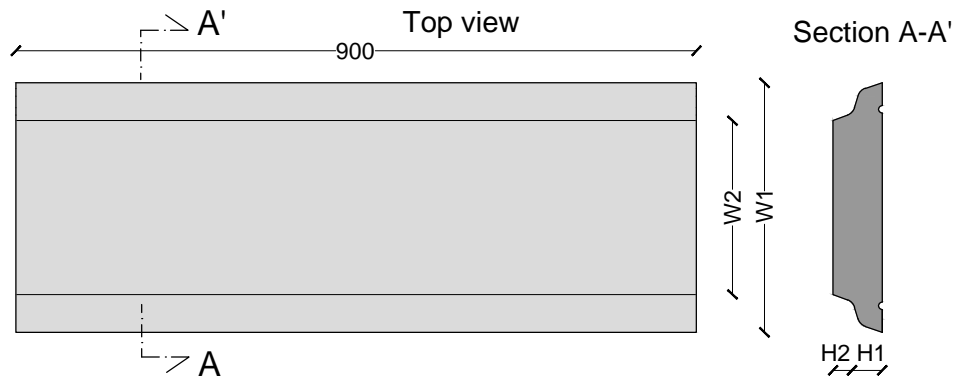


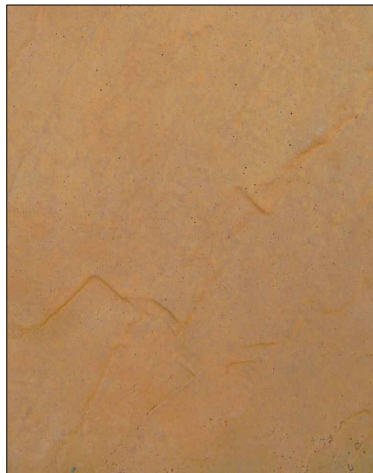
FLAT TOP WALL COPING A



| Element | Actual Size (mm/inch) | | | | | | | | |
|---------------|-----------------------|--------|----|----|-------------|----|----|------------------------------|-------------------|
| | W1 | W2 | W3 | W4 | H1 | H2 | H3 | AREA per m (m ²) | Weight per m (Kg) |
| Wall Coping C | 175/7" | 100/4" | | | 65 - 2 1/2" | | | 0.0092 | 22 |
| | 300/12" | 180/7" | | | 65 - 2 1/2" | | | 0.014 | 37 |
| | 330/13" | 230/9" | | | 66 - 2 1/2" | | | 0.0182 | 44 |



Perspective View 3D



DEEP BUFF



NUT BROWN



RUSTIC BROWN



Top View 3D

Details

Cassidy Brothers produce different types of concrete coping walls in a range of different sizes and colors. Additional colours on request.

Specifications Wall Coping C

- Reconstructed Concrete



Table: FLAT TOP WALL COPING TYPE A

Scale - 1: 10 | file: Decorative_precast.dwg

Date: February 2016 | Rev.:

Designers

Eng. Filippo Zoncheddu
Eng. Martin Lynch
Eng. David Cassidy

DECORATIVE
PRECAST

Cassidy Brothers Concrete
Cassidy Precast Dpt.



HEAD OFFICE

Gransha, Bunrana Co Donegal
+353(0)749361777
info@cassidybros.ie

